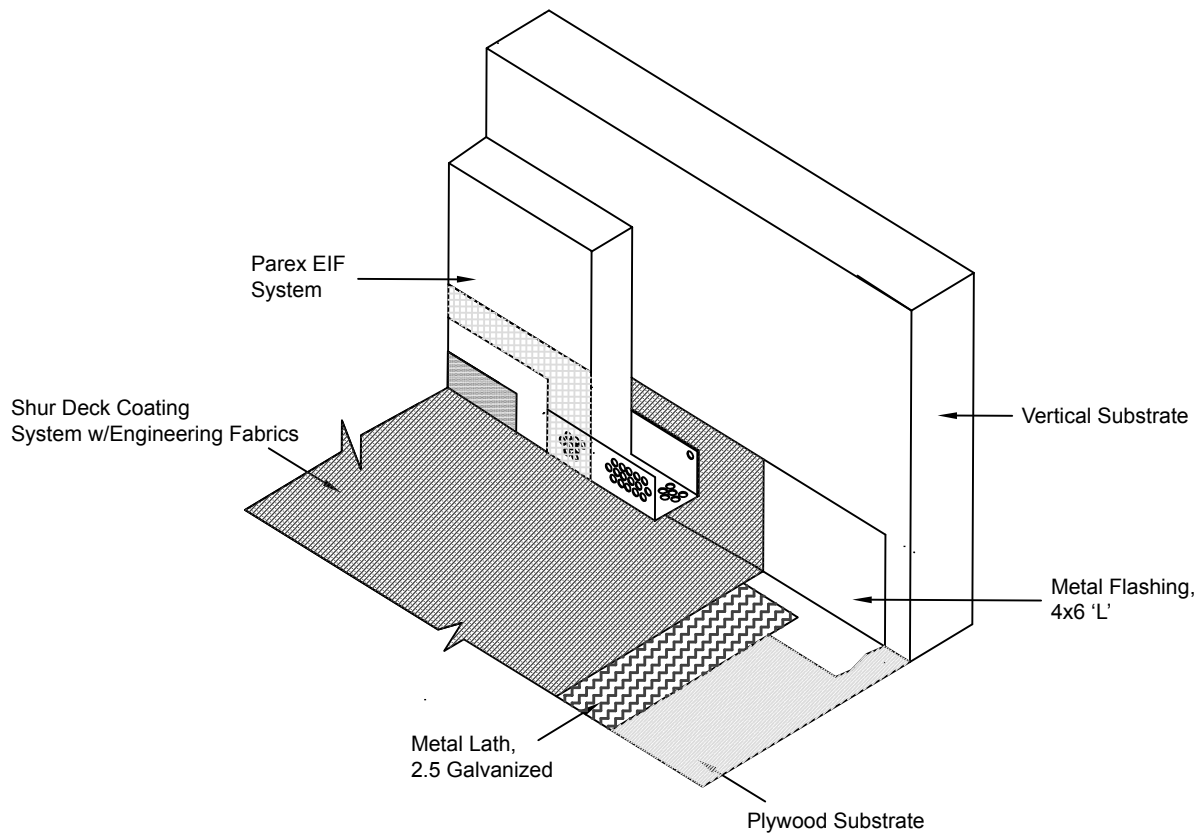


### Shur Deck EIFS Transition on Plywood



Note: Drawing not to scale.

For Technical Help on any of Mer-Ko's engineering detail drawings, or to request additional information, contact us at

**(866) 516-0061, Technical Help Line**  
**(800) 851-6303, Sales & Service**  
**[www.parexmer-ko.com](http://www.parexmer-ko.com)**